



KINGDOM BUILDERS

ABOVE & BEYOND

WE EXIST TO

**PASSIONATELY CONNECT PEOPLE
TO AN AUTHENTIC LIFE IN CHRIST**

BY RESOUNDING THE MESSAGE, MAKING DISCIPLES AND PLANTING CHURCHES

WORTHY OF IT ALL
WORTHY OF IT ALL



**REVERB
CHURCH**



PASTOR BRYAN & RENÉE LAMOUREUX

A LETTER FROM THE HEART OF OUR PASTOR

We just wanted to take a moment to tell you how much we care for Northeast Florida and how privileged we feel to serve the people of Reverb Church. We've spent time praying over and planning this upcoming year. We believe the points of passion in this booklet reflect God's heart as we sacrificially give toward Kingdom purposes.

We're really excited about making a greater impact for God's Kingdom and we look forward to doing it together with you. It has never been easier to join us on mission through our Kingdom Builder's initiative. We truly believe that lives both locally and globally will be changed forever.

As a couple, we're excited about what God will accomplish through our Kingdom Builder partners. This year, we will continue to put our personal generosity into action going above and beyond our tithes to make a difference. We're asking you to take this faith-filled journey with us to passionately connect people to an authentic life in Christ.

Let our prayers align with the words of Jesus in Matthew 6:10 (ESV), "Your kingdom come, your will be done, on earth as it is in heaven". We thank you in advance for your faithful generosity and we can't wait to celebrate all the Lord accomplishes through our efforts.

We love you,

PASTOR BRYAN & RENÉE



KINGDOM BUILDERS

2024 GOAL
\$850K

In the pages of scripture the concept of “The Kingdom” emerges with resounding prominence. Its recurrence is striking—echoing through the verses repeatedly. Notably, it finds mention more than a hundred times within the New Testament alone. Christ’s teachings are explicit, urging us to shift our focus from mere self-concern to a mindset deeply rooted in God’s Kingdom principles.

But what does this entail? It’s all too easy to become consumed by our individual aspirations. Yet, time and again, the Bible challenges us to break free from this outlook and instead see the needs of others both physically and spiritually. A vital means of achieving this shift is through contributing financially to causes that align us to our vision which is to passionately connect people to an authentic life in Christ.

What we all must realize is that our heart’s desire to expand the Kingdom of God is never going away as a church. Our goal will always be to advance Kingdom causes in our region and around the world. Questions arise like, “Where does God desire us to broaden our influence and reach?” and “What are those worthwhile causes He has etched onto our hearts?” In this context, we find our answer in the form of Kingdom Builders—an initiative that stands as a reservoir, connecting ways for us to unite annually as a church around multiple Points of Passion.

Our goal for 2024 is to raise \$850K above and beyond our regular tithes (10% of our income/increase). In this booklet, you will learn about our Points of Passion: People, Places, and Partnerships. This year, we are introducing a NEW passion category called Possibilities. This NEW point of passion removes the vision lid for Reverb Church and looks at what is possible with God’s unlimited resources and our obedience. We believe 2024 will be an incredible year and are very thankful that we have the opportunity to share it with you and your family!

**I'VE NEVER BEEN MORE GLAD
THAT I PUT MY FAITH IN JESUS**





POINT OF PASSION PEOPLE

\$300K

At Reverb Church, we desire to serve our community and our world with the love of Jesus in a tangible way. Below, we have highlighted a few ways we can accomplish our goals. Outreach events, RTX Internship, YTH student ministry, short-term missions trips, benevolence, and keeping pastors healthy are just a few of our initiatives.



INCLUDES

CITY SERVE

As part of our outreach strategy, we want to impact the community with events like the Back-to-School Projects, Widows and Orphans, Prisoners, Neighborhood Evangelistic Block Parties, and more.

YTH SUMMER CONFERENCE

We want to help YTH students and leaders (Middle & High School), who couldn't otherwise afford it, go to camp and grow in their relationship with Jesus. This also covers any additional costs for YTH camp including transportation, food, hotels etc.

TEAM AND LEADER DEVELOPMENT

As we grow as an organization, our teams and leadership must grow. Our heart is to continue to develop the people of Reverb Church through the best resources and training made available in the body of Christ. Our goal is to help fuel those that desire to grow in their gifts and use them for the advancement of the Kingdom of God.

SHORT TERM MISSION TRIPS

We are not only excited about reaching people in Northeast Florida but people around the world! We believe lives can be changed for eternity by simply introducing them to the message of Jesus! We plan on introducing new opportunities for in-person mission trips in 2024. This helps us cover extra costs and sponsorship for international travel.

LOCAL, NATIONAL & INTERNATIONAL BENEVOLENCE

We know that we cannot predict all of our passions or opportunities that may present themselves throughout the year. Benevolence will help meet the spontaneous needs of people in our church, our local community, our nation, and those around the world.



RTX

REVERB TRAINING EXPERIENCE

RTX is an 18-week intensive leadership development and ministry training experience at Reverb Church. The program is designed to build world-class leaders who build the local church.

Students will get real-life church staff experience, teaching from the best minds around the world, and leave with an experience that will prepare them for any church staff role.

At the end of RTX, we believe that every graduate will leave ready to jump into any role within the local church.



THE COLLECTIVE

FOR LEAD PASTORS & CHURCH PLANTERS

The Collective was founded by Pastor Bryan Lamoureux in 2017. His heart has always been to come alongside pastors, their wives, and their teams to make the local church stronger.

The Collective exists for ministry leaders to connect, collaborate, and care for one another for the advancement of the Gospel. The Collective consists of independent churches from different denominations, networks, and backgrounds centered on Jesus.

This makes it possible for churches to come together in unity around Him and not around our minor doctrinal differences.



POINT OF PASSION PARTNERSHIPS

\$415K

We partner with key organizations, churches, and ministries that are taking the Good News to our world and making life better for people. These include our local and national church planters, global missionaries, Christian humanitarian efforts, and pregnancy care centers. We also support child sponsorships to ensure health, education, and nutrition for children all over the world.



INCLUDES

CHURCH PLANTING

Church planting is a large part of our mission. We believe Jesus is the hope of the world and so we must mobilize and support His building of the church. More people are coming to faith in Christ through NEW church plants than any other way in our world today. We want to continue to sponsor the planting of life-giving churches in our city and around the world. Here is a list of where our church planting support is going in 2024:

- **Kindred Church** | St. Augustine, FL
- **Mission City Church** | St. Augustine, FL
- **Roots Church** | St. Johns, FL
- **One Heart Church** | Green Cove Springs, FL
- **Doxa Church** | Green Cove Springs, FL
- **Fearless Church** | Port Charlotte, FL
- **Together Church** | Jacksonville, FL
- **Accessible Church** | Québec, Canada
- **ARC Church Planting Organization**
- **Compassion International NEW Church Plant**



LOCAL MISSIONS

- **First Coast Women's Services** | N.E. FL
- **St. Francis House** | St. Augustine, FL
- **All Nations Soccer** | Jacksonville, FL
- **Mission House Jax** | Jacksonville, FL



ST. FRANCIS HOUSE

St. Francis House is located in Downtown St. Augustine. Their mission is to assist and engage vulnerable families and single adults without housing through compassion, providing shelter, and opportunity-driven programming to ensure their homelessness is rare, brief, and one-time. Our support directly impacts the lives of homeless youth in our community



INCLUDES

ALL NATIONS SOCCER

To RESTORE refugees from the devastation and loss they came from, help them thrive in creating a new life, and to restore people of all nations in their relationship with God. To UNIFY refugees with people of all nations in our city by using the game of soccer and the model of Jesus to break down racism and forge a healthy community. To EMPOWER refugees and people of all nations with the character and values to thrive by positively impacting our community and helping raise up the next generation.

FIRST COAST WOMEN'S SERVICES

First Coast Women's Services is a pregnancy care center that operates under the guidelines of Care Net International. FCWS is a Christian-based organization that performs free ultrasounds to encourage clients to choose life. This is just one of many services with which they provide compassionate hope and help to women and men who are facing fear and indecision in a time of real crisis.

NATIONAL MISSIONS

- Barnabas Network | Pastor Retreats
- Prison Ministry

GLOBAL MISSIONS

We want to continue to sponsor missionaries and churches around the world. Here is a list of where our global mission support is going in 2024:

- Buena Vista Soccer Academy | Honduras, Guatemala, West Africa, Quiche'
- Shepherd's Flock Home of Victors | India
- Ngäbe Indians | Panama
- Funding for Free Bibles | Pakistan
- DOA Tribe | Indonesia
- Propel Ministries | Serbia
- Compassion International
- Convoy of Hope | Gospel-Centered Relief Efforts
- One Hope | God's Word, Every Child



MISSION HOUSE

JACKSONVILLE, FL

Mission House is the only day facility to help meet the needs of people who are homeless at the Beaches through compassion, faith, and programs designed to provide assistance at an individual level. Today, our number one goal is to assist people affected by homelessness off the streets and back to productive and self-sufficient lives. Clients enrolled in our Crisis Care Program have access to meals, showers, clean clothing, and case management. The time spent with case managers is imperative as it is the only way that we can learn how they arrived at this point in their lives. Each case is as unique as the person themselves. The face of homelessness has changed dramatically over the years. Due to economic conditions, family background, and life situations, each one of our clients has faced a trial in their life that they may not have expected. We are here to assist them in planning a way back to an independent and positive way of life.

Mission House serves adult women and men experiencing homelessness. However, many families with children find their way to Mission House. When a family comes to Mission House, we meet with them to assess their needs and work with our community partners to immediately address family homelessness, finding immediate temporary shelter or housing for families with children.

Mission House

Rebuilding lives



COMPASSION INTERNATIONAL

CHURCH PLANTING

Reverb Church loves church planters. Each year, our goal is to plant one new church with Compassion International in specific regions of the world. In the church planting process, Compassion's national office identifies churches who are ready to multiply. These "mother churches" choose a location for a new plant and select a planter who is visionary, gifted, and trained to plant. The mother church provides oversight and encouragement for the planter so the church has every opportunity to thrive and grow.

Compassion's network of churches span 29 developing countries. Each country operates strategically to select and train frontline churches that implement Compassion's child development program. Although the priority of the national office is primarily the success of the child development center, the general health of the church is also monitored. To date, all 260+ church plants are still sharing Christ's love and grace in their neighborhoods and operating as fully developed churches.



TOGETHER CHURCH, FL

LAUNCHING IN 2024, JACKSONVILLE

Together Church is launching in 2024 in the Riverside/Avondale area of Jacksonville, Florida. Jake and Chelsea Jaudes, have served in full-time ministry and partnered with many community organizations throughout Northeast Florida for the past 7 years.

God is now calling them to pioneer the mission of Together Church; Exalt God, Equip the saints, and Engage the world.



POINT OF PASSION PLACES

\$135K





INCLUDES

2ND ST JOHNS LOCATION

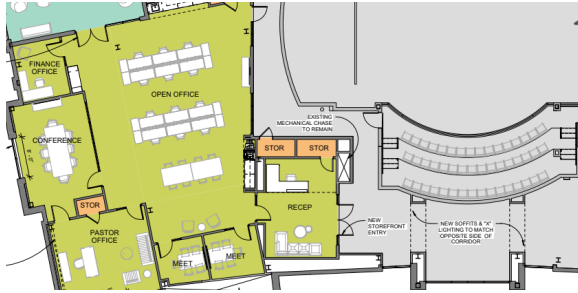
We are a church that has multi-site in its DNA. Planting additional Reverb locations serves to support Reverb Church's mission which is to Resound the Message, Make Disciples, and Plant Churches.

As we look to expand in our area, we must financially prepare now for the season ahead. Whether portable or a permanent location, the Kingdom Builder fund helps with the purchase of equipment, staffing, and other needs that make this new location possible. Please stay tuned for more information regarding this exciting new launch.



POINT OF PASSION POSSIBILITIES

This NEW point of passion removes the vision lid for Reverb Church and looks at what is possible with God's unlimited resources and our obedience. We would love to set up a time to share the vision and discuss the funding of any of these amazing projects. Together, we can see our dreams become a reality.



INCLUDES

REVERB HQ CONSTRUCTION: \$1.25M
Estimated Project Completion | Fall 2024

As a part of Phase 2 construction at our World Golf Village location, we have 4,600 sq. ft. of shell space we desire to build out for our Reverb Headquarters. These administrative offices will serve us now and in the future.



REVERB CHURCH | DEBT-FREE MORTGAGE: \$3.9M

As a part of our future, we understand debt reduction is important to the overall health of our church. Our current mortgage on 395 S. Legacy Trail is just under \$4,000,000.

Paying off the mortgage for our church is of paramount importance as it allows us to truly call the property our own, unburdened by ongoing financial obligations. A debt-free church can allocate more of its resources toward fulfilling its core mission and serving the community. Moreover, a mortgage-free status provides a sense of financial stability and security, ensuring that the church can weather economic challenges and continue to offer vital spiritual and community services for generations to come.





REFUEL

COFFEE CO



DON'T
DREAM
ON EMPTY



 REFUEL COFFEE CO



INCLUDES

REFUEL COFFEE COMPANY

Our goal is to leverage a portion of the \$95.58 billion dollar coffee industry in the U.S. for Kingdom purposes. Let's make a difference in our backyard and around the world. REFUEL COFFEE CO. will change the negative narrative and worldly culture you find celebrated at other coffee companies.

We are people-focused and will continue to be an extension of the work already being accomplished at Reverb Church. We know that the best companies give back. That's why we partner with Compassion International and other reputable missions partners in giving away all our profits.

Through those profits, we will invest in global communities and release children from poverty in Jesus' name. We will accomplish this by planting churches, sharing the gospel, sponsoring children, and impacting local coffee farmers around the world.

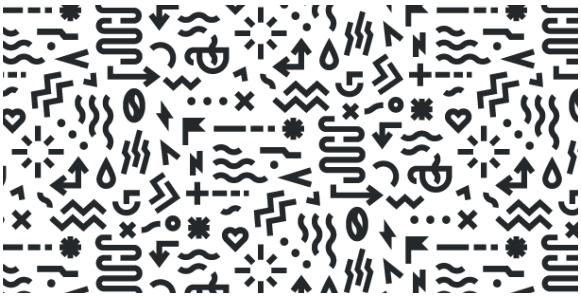
Get inspired. Make a difference.

Completion of Branding for 395 S. Legacy Trail Location | Reverb Church | \$15K Estimated Project Completion | Early 2024

St. Johns County Location #1 with Drive Thru | \$1M Estimated Project Completion | Spring 2025

St. Johns County Location #2 with Drive Thru | \$1M Estimated Project Completion | Spring 2026

Our audacious goal is to operate 50 locations by 2040



REVERB ACADEMY

K - 8TH GRADE

At Reverb Academy, our mission will be to create and maintain a Christ-centered educational environment that provides a strong education within a Biblical worldview. The Great Commission is at the very heart of all we will do, as a fellowship of believers committed to a quality Christian education.

Reverb Academy, a covenant Christian school, partners with like-minded parents in the development of their children. Our educators and staff will be born-again, caring, credentialed educators. Our facilities will be state-of-the-art with a music and arts focus. Our learning environments will be safe and encouraging. Our school community encompasses and will reach beyond our parent ministry which is Reverb Church.





HOW TO GET
INVOLVED

PRAY

Ask God how He wants you to participate
in Kingdom Builders.

SACRIFICE

When we give above and beyond our tithe for
others, we will advance the Kingdom Causes.

GIVE

Every dollar you give goes towards support for all our points
of passion here and around the world.

WAYS TO GIVE

TEXT

Text 'REVERB' to 77977 and follow the link to the giving pages. Select 'Kingdom Builders' under the fund option

WEBSITE

Visit www.reverb.church/giving, click 'Give Online Today' and then select 'Kingdom Builders' under the fund option

CHECK

Leave a check in the offering buckets on Sundays payable to Reverb Church with "Kingdom Builders" in the memo

YOU ARE I



MY ONE THING





REVERB.CHURCH/KINGDOMBUILDERS